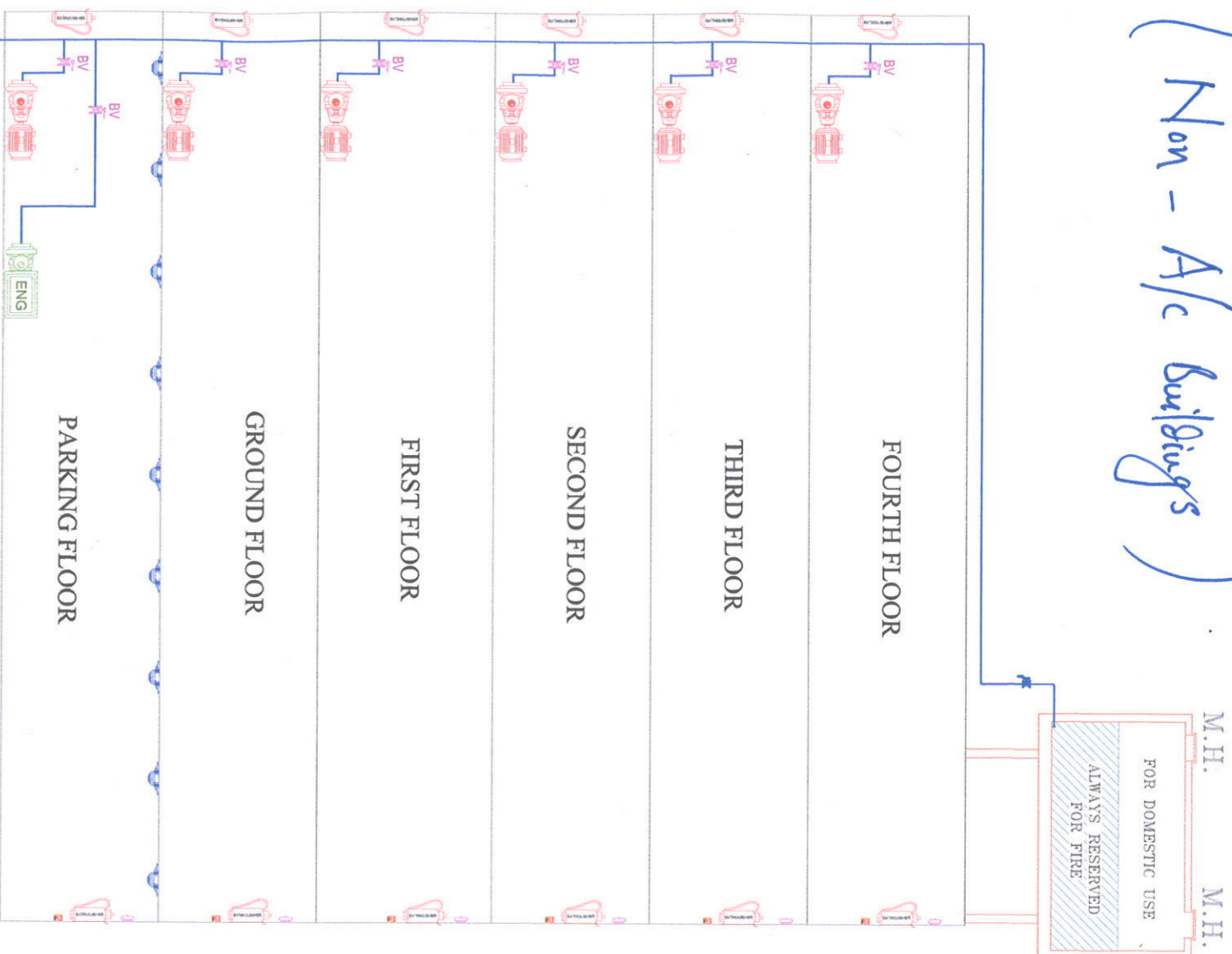


**EDUCATIONAL BUILDINGS
(LESS THAN 15 METERS)**
TYPICAL SCHEMATIC OF FIRE FIGHTING EQUIPMENT

(Non - A/c Buildings)

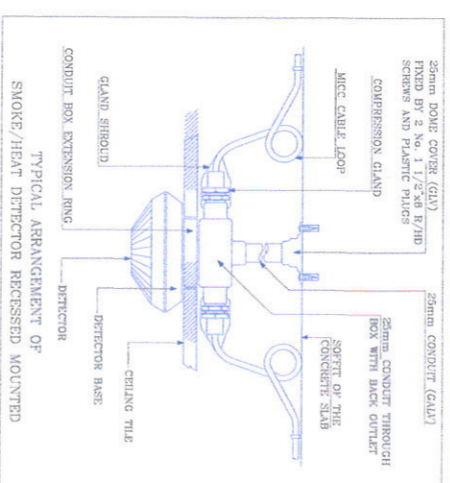
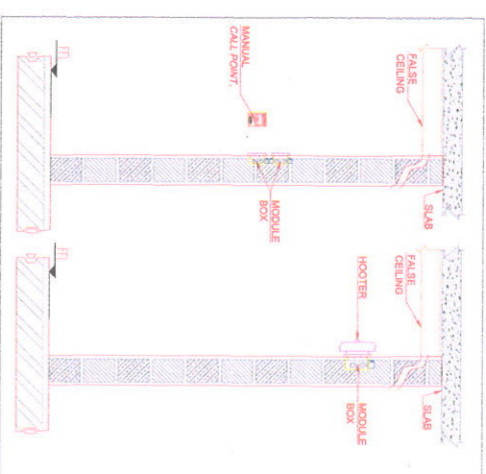


Fire Fighting System Requirement

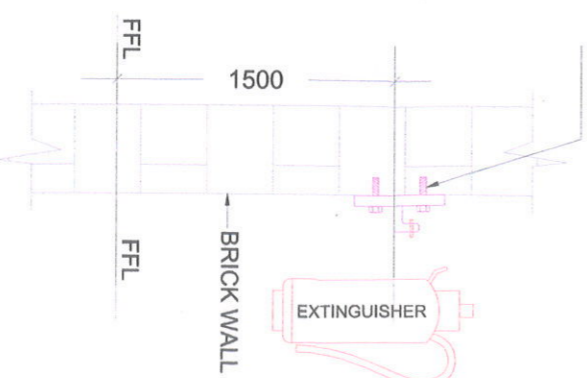
SL/NO	FLOOR	EXTINGUISHERS	MCP	ALARM HOOTERS	HEAT DETECTORS	SMOKE DETECTORS	2HP PLUNGER PUMP	6HP PETROL PLUNGER PUMP
1	TYPICAL FLOOR	REQ. NOTE 1	REQ. NOTE 2	REQ. NOTE 3	REQ. NOTE 4	N/A	REQ. NOTE 5	REQ. NOTE 6

- NOTE 1:** Required 1no. per every 100 sq.m
NOTE 2: Required 1no. @floor in every staircase.
NOTE 3: Required 1no. @floor in every staircase.
NOTE 4: Required in basement floor / parking floor.
NOTE 5: Required 1no. per every floor / (1no. per every 1000 sq.m)
NOTE 6: Required 1no. at basement / parking floor (1no. per every 1000 sq.m)
OTHER RECOMMENDATIONS

1. Ensure compulsory 2-exits (Second exit either can be ramp, stair case, fenced pathway to adjacent building tube lift.)
2. Ensure installation of MCBs for all whenever necessary.
3. Ensure emergency power for fire fighting pumps
4. LED lighting in closed room, corridors, stair case connected to inverter (Battery) to ensure well light pathway for exit & evacuation.
5. Grounding/Earthing shall be done as per BIS.
6. Lighting Arrests shall be installed for building greater than 5 floors. Smoke management which is ensured through smoke test.
7. At parking floors (Non open floors i.e Basement), temperature sensor at various location connected to hoodlers to alert



CONNECTION TO BE SUIT AS PER SITE CONDITION



TYPICAL FIRE EXTINGUISHER FIXING DETAIL

SHOWN AS	DESCRIPTION
	2HP TRIPLEX PLUNGER PUMP
	6HP TRIPLEX PETROL ENGINE PUMP
	HEAT DETECTOR
	MANUAL CALL POINT
	ALARM HOOTER
	FIRE EXTINGUISHER
	WATER FLOW CONTROL VALVE

**Director General
State Disaster Response & Fire Services,
Andhra Pradesh - Vijayawada.**

19/9/2024

5 4 3 2 1