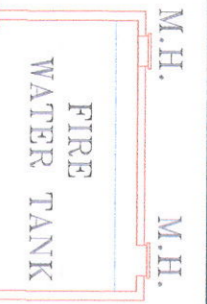
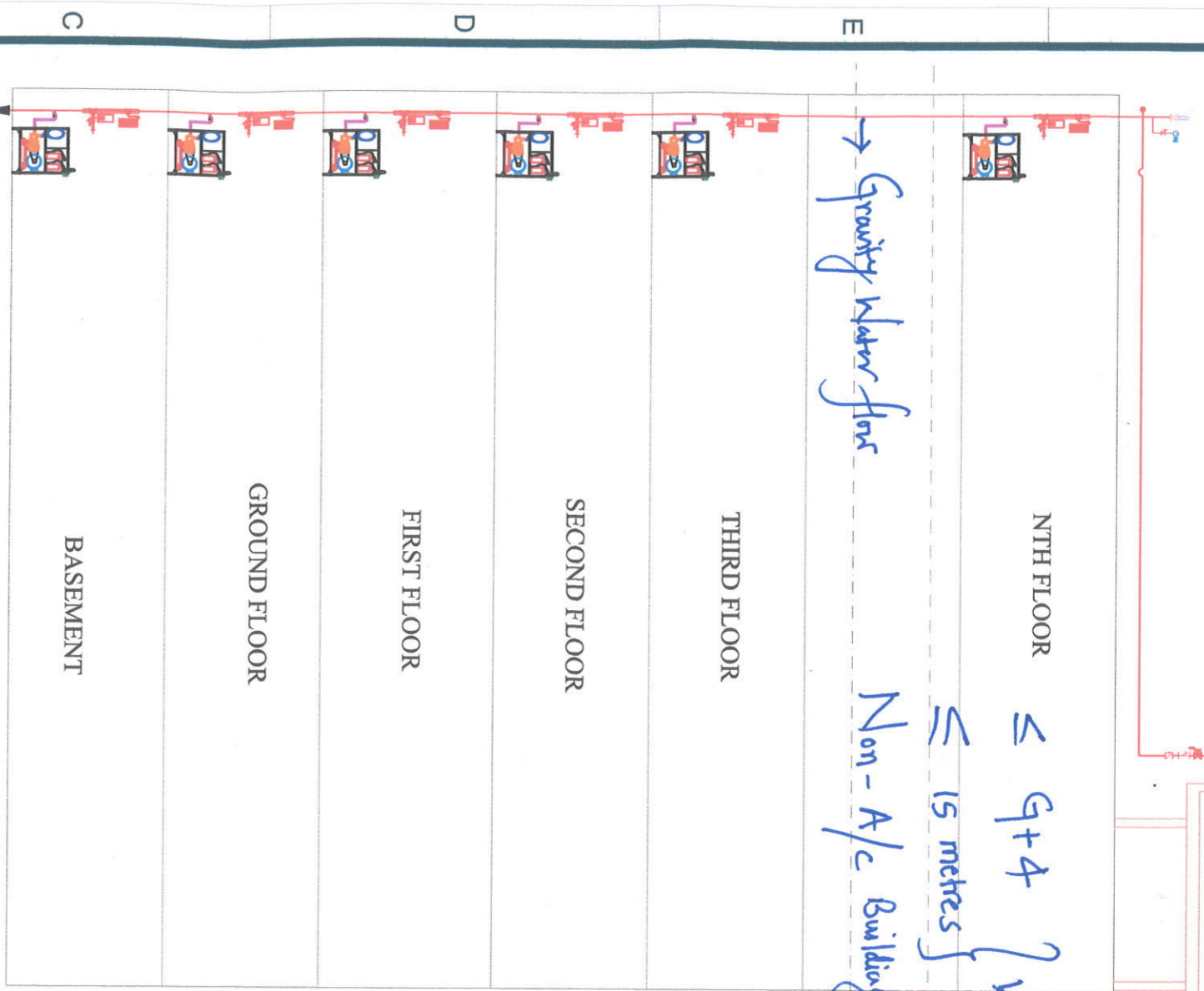


G
RETRO FITTING FOR DOWNCOMER / WETRISER
COMMERCIAL BUILDINGS
 TYPICAL SCHEMATIC OF FIRE FIGHTING EQUIPMENT



| SHOWN AS | DESCRIPTION |
|----------|--------------------------------|
| | SHP HIGH PRESSURE PLUNGER PUMP |
| | HIGH PRESSURE HOSE |
| | FIRE EXTINGUISHER |
| | BALL VALVE |
| | CIRCUIT BREAKER (MCB) |
| | LIGHT INDICATOR |



→ Gravity Water flow

Non-A/c Buildings } whichever is less } ≤ 15 metres } ≤ G+4

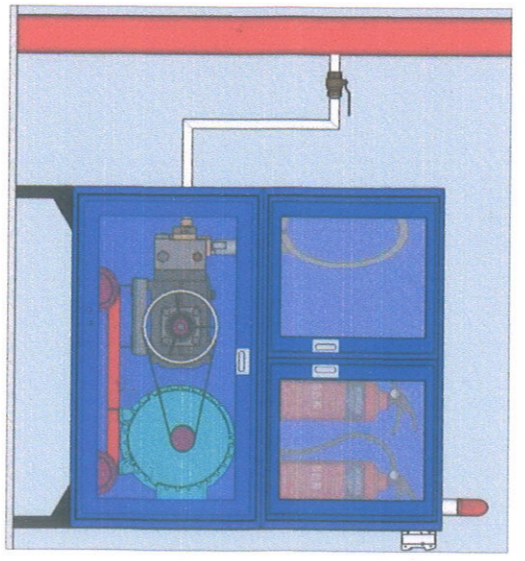
EXISTING DOWN COMER / WET RISER

Fire Fighting System Requirement

| SL/No | FLOOR | EXTINGUISHERS | MCP | ALARM HOOTERS | HEAT DETECTORS | SMOKE DETECTORS | 5HP PLUNGER PUMP | 10HP PETROL PLUNGER PUMP |
|-------|---------------|---------------|-------------|---------------|----------------|-----------------|------------------|--------------------------|
| 1 | TYPICAL FLOOR | REQ. NOTE 1 | REQ. NOTE 2 | REQ. NOTE 3 | REQ. NOTE 4 | REQ. NOTE 5 | REQ. NOTE 6 | REQ. NOTE 7 |

- NOTE 1: required 1no. per every 100 sq.m
 - NOTE 2: Required 1no. @floor in every staircase.
 - NOTE 3: Required 1no. @floor in every staircase.
 - NOTE 4: Required in basement floor / parking floor.
 - NOTE 5: Required in all floors except basement floor/parking floor **1500 sq**
 - NOTE 6: Required 1no. per every floor / (1no. per every ~~1000~~ **1500** sq.m)
 - NOTE 7: Required 1no. at basement / parking floor (1no. per every 1000 sq.m)
- OTHER RECOMMENDATIONS**

1. Ensure compulsory 2-exits (Second exit either can be ramp, stair case, fenced pathway to adjacent building tube lift.)
2. Ensure installation of MCB's for all whenever necessary.
3. Ensure emergency power for fire fighting pumps
4. LED lighting in closed room, corridors, stair case connected to inverter (Battery) to ensure wall light pathway for exit & evacuation.
5. Grounding/Earthing shall be done as per BIS.
6. Lighting Arrestis shall be installed for building greater than 5 floors. Smoke management which is ensured through smoke test- **if A/c**.
7. At parking floors (Non open floors i.e Basement), temperature sensor at various location connected to hooters to alert
8. Ensure Smoke Detector in all floors connects to Alarm Hooter.
9. Existing pump house at UG sump level can be removed



Let there be Visible Cabinet to place the Plunger Pump so that it is accessible in case of accident.

Director General
 State Disaster Respons. & Fire Services,
 Andhra Pradesh, Vijayawada.

[Signature]
 13/5/2024

5 4 3 2 1